

Powerful purity

Innovative backwash filters MR and MRA for trade, industry and large residential buildings

The protective filters according to DIN EN 806-2 that can be backwashed manually or fully automatically and combine proven filter performance with state-of-the-art components for drinking water and industrial water treatment.



Backwash filter MR

Backwash filter MRA

Your benefits at a glance

- ✓ Quick assembly**
Since all components are pre-assembled, the installation is completed in just a few minutes. In case of the automatic version, the control unit comes already mounted directly on the filter.
- ✓ Flexible installation**
The control unit of the automatic filters can be aligned without any tools and thus be conveniently operated regardless of the flow direction.
- ✓ Easy to use**
Guided start-up on the colour display of the automatic filters guarantees quick, intuitive and faultless installation.
- ✓ Hot water resistance**
All versions of the protective filters are resistant to hot water up to 90 °C, i.e. they also protect systems and devices that are operated with hot water.
- ✓ Convenient signal forwarding**
The integrated bus interface, an error detection system and a voltage-free contact are designed for easy remote monitoring and control, thus keeping you informed on the current system status at all times. This is a particular benefit in case of installation situations where access is difficult.

grünbeck

The extra bit of purity

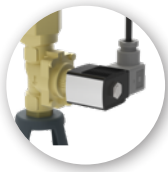
The high-quality filter element with stainless steel mesh provides reliable protection from ultra-small particles and makes sure that downstream systems operate smoothly.

The free outlet according to DIN EN 1717 prevents the water from flowing back.

The integrated brush enables additional cleaning of the filter insert during backwash.

The solid brass housing surrounding the filter element provides UV protection and prevents algae growth.

Accessories



The **safety solenoid valve accessory kit**, which can easily be retrofitted on the automatic filter MRA, closes off the flow to the drain in the event of a power failure and thus prevents unnecessary water loss. (Order no. 107000150000)



The backwash filter MR can be integrated into **Grünbeck's myProduct app**. This is how you will be reminded of the manual backwash in good time.

Please inquire about different nominal diameters and filter pore sizes of 50, 200 and 500 µm.



The automatic filter MRA can be enhanced by a **pressure sensor accessory kit**, which registers the pressure upstream and downstream of the filter. A backwash is released automatically when the water pressure decreases due to the contamination of the filter. A warning message in the event of decreasing system pressure provides additional safety for the systems installed downstream. The limit value can be adjusted individually. (Order no. 107000160000)



The flexible **drain connection** according to DIN EN 1717 with integrated siphon perfectly rounds off the filter series. (Order no. 188 875)

Technical specifications

- Nominal pressure PN 16 • Drain connection DN 50
- Power supply 100 – 240 V, 50/60 Hz (MRA)

Backwash filters MR/MRA [DN]	25	32	40	50
Flow rate, $\Delta p = 0.2$ bar [m ³ /h]	8.5	12.0	22.0	28.0
$\Delta p = 0.5$ bar [m ³ /h]	13.0	18.5	32.5	45.0
Installation length without screw connections [mm]	190	190	206	206
with screw connections [mm]	276	281	342	323
Order no. MR	107000010000	107000020000	107000030000	107000040000
Order no. MRA	107000080000	107000090000	107000100000	107000110000

Backwash filter MR [DN]	65	80	100
Flow rate, $\Delta p = 0.2$ bar [m ³ /h]	37.0	60	60
$\Delta p = 0.5$ bar [m ³ /h]	58.0	96.5	98
Installation length without counter-flanges [mm]	220	250	250
Order no. MR	107000050000	107000060000	107000070000

grünbeck